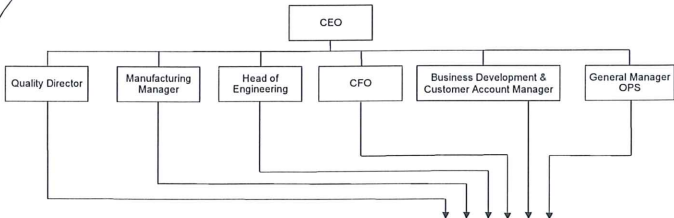


Lymington Precision Engineers Quality Manual

Approved by *[Signature]* Chief Executive Officer Amendment number 24 Dated 08/09/2016

Key responsibilities organisation chart



Procedure	Reference number	Quality	Manufacturing	Commercial	Finance	Administration	Procurement
Supplier Control	1007	Process user	Process user	Process user	Process user	Process user	Responsibility & process user
Goods receiving and inspection	1008	Process user	Process user	Process user	Process user	Process user	Responsibility & process user
Procurement	1017	Process user	Process user	Process user	Process user	Process user	Responsibility & process user
Control of nonconforming product	1020	Process user	Process user	Process user	Process user	Process user	Responsibility & process user
Internal audits	1026	Process user	Process user	Process user	Process user	Process user	Responsibility & process user
Calibration	1030	Process user	Process user	Process user	Process user	Process user	Responsibility & process user
Welding control	1032	Process user	Process user	Process user	Process user	Process user	Responsibility & process user
Contract review & process planning	1036	Process user	Process user	Process user	Process user	Process user	Responsibility & process user
Control of documents	1037	Process user	Process user	Process user	Process user	Process user	Responsibility & process user
In-process & final inspection	1039	Process user	Process user	Process user	Process user	Process user	Responsibility & process user
Issue & control of stamps	1040	Process user	Process user	Process user	Process user	Process user	Responsibility & process user
Control of records	1042	Process user	Process user	Process user	Process user	Process user	Responsibility & process user
Training and development	1043	Process user	Process user	Process user	Process user	Process user	Responsibility & process user
Process control & service provision	1045	Process user	Process user	Process user	Process user	Process user	Responsibility & process user
Control of CNC & CMM programmes	1048	Process user	Process user	Process user	Process user	Process user	Responsibility & process user
Plant & maintenance	1053	Process user	Process user	Process user	Process user	Process user	Responsibility & process user
Cleaning of components	1054	Process user	Process user	Process user	Process user	Process user	Responsibility & process user
Project control	1055	Process user	Process user	Process user	Process user	Process user	Responsibility & process user
Management review	1056	Process user	Process user	Process user	Process user	Process user	Responsibility & process user
Control of customer supplied product	1057	Process user	Process user	Process user	Process user	Process user	Responsibility & process user
Corrective action	1059	Process user	Process user	Process user	Process user	Process user	Responsibility & process user
Product Identification & traceability	1060	Process user	Process user	Process user	Process user	Process user	Responsibility & process user
Picking packing and despatch	1061	Process user	Process user	Process user	Process user	Process user	Responsibility & process user
Preventive action	1062	Process user	Process user	Process user	Process user	Process user	Responsibility & process user
Procedure / IFS Process guide matrix	1063	Process user	Process user	Process user	Process user	Process user	Responsibility & process user

Process user
 Responsibility & process user

Quality and Environmental Policy

Lymington Precision Engineers, (LPE) manufactures small and large batches of machined components including assembly of items using welding and fastening. The scope of this Policy is applicable to the Gosport Street, Lymington address and Gordleton facility as defined by the management system.

LPE is committed to meeting its customers expectations as well as recognising that its activities have an impact on the environment in terms of use of raw materials, emissions to air and water and waste generation and will seek to minimise its impact on the environment so far as is reasonably practicable.

The company's guiding principles in achieving its Quality and Environmental objectives is to conduct its processes:-

RIGHT FIRST TIME, ON TIME, EVERY TIME.

The CEO and all employees are committed to ensuring that the Quality and Environmental systems are effective and continually improved and that pollution is prevented. In addition, LPE will comply with all applicable Legal and Other requirements to which it subscribes.

The Senior Management Team will set measurable Quality and Environmental objectives and targets and review these at regular intervals.

This Policy shall be communicated to all employees and persons working for and on behalf of the company and will be made available to the public via the company website. The Policy will be reviewed for applicability annually.

Quality system scope of approval:- "Campus site"

Subcontract manufacture of small and large batch production of machined components including conventional and CNC milling, turning and grinding. Production of sheet metal work and machined welded fabrications and assemblies.

The scope of the QMS excludes section 7.3 Design due to LPE producing product to customer specifications and 7.5.1.4 a,c,d,e Post Delivery Support

